



The complete range of hot water and heating solutions from the Electric Heating Company.

The Electric Heating Company Limited
Block 5, Unit 40, Third Road,
Blantyre Industrial Estate
Blantyre G72 0UP,
United Kingdom

Tel: 01698 820533. Fax: 01698 825697.
Email: info@electric-heatingcompany.co.uk

www.electric-heatingcompany.co.uk



Our range of electric heating products includes the award winning Fusion Electric Boiler and Fusion E10 Electric Combination Unit.

We are renowned for always putting the customer first, and have won national customer service awards in recognition of our efforts. From initial enquiry to completed order, we believe in focusing our attention on customer care.

In the past, electric heating products were perceived to be expensive to operate however with our unique range of products and our advice on competitive electricity tariffs throughout the UK we have made running costs for electric heating affordable when using our systems.

When householders are asked which type of heating system they prefer the answer is normally gas, although what they are really looking for is an affordable and fully controllable central heating system. This has not always been possible as there is no access to mains gas in many areas of the country.

This is no longer a problem. Modern direct acting electric heating systems are, like gas systems, fully controllable, easy to operate and affordable to run.

If you are thinking of replacing your current Central Heating System we recommend the distinctive Mercury Low Water Content Radiators and EHC Water Heaters as the ideal complement to your choice of Fusion Electric Boiler.

Give us a call on 01698 820533 or visit our website at www.electric-heatingcompany.co.uk if you'd like some advice on your product and electricity tariff options. Our personnel at EHC are approachable, very experienced and committed to ensuring you have the best available options when choosing your products and electricity tariff.



Fusion Standard / Slimline Unit

1



Fusion E10 Combination Unit

2



Fusion E10 Solar Combination Unit

3



Twister

4



Amicus

5



Opus

6



Bonus

7



Luna

8



EHC Mercury Radiator

9



Our range of Electric Boilers provide complete peace of mind for reliability, performance and safety.

The Fusion range of electric boilers is the most complete in the market today. It offers the perfect solution for properties with no access to a mains gas supply or homes which have gas boiler restrictions e.g. listed buildings and bed-sit sleeping areas. They are also commonly used in rural areas as replacements for oil and LPG boiler systems.

These 100% energy efficient products are traditionally installed by professional heating engineers throughout the UK in typical properties such as apartments, domestic dwellings, holiday homes and light commercial properties.

Because the Fusion Boiler is so reliable and affordable, the range is specified by numerous Social Landlords as the preferred option when replacing storage heaters and other outdated forms of central heating.

The Fusion range has been developed over the years to offer a 'Plug and Play' solution to meet the demands of professional installers and the various problems presented by the different property types in the UK. Originally a single Fusion Standard Boiler, the range has grown to meet the increasing demands of Building Regulations and the need for **renewable** products within the UK.

We are confident that our Fusion boilers will provide the perfect solution for your central heating requirements.

Fusion Standard/Slimline Boilers

Ideal for retrofit and new build installations requiring heating only or heating and hot water. Either a direct or indirect cylinder for hot water purposes will be required.

Due to their compact size these system boilers can be easily situated in airing or kitchen cupboards.

All Fusion products can be installed with any type of wet system radiator, but for improved performance and running costs we strongly recommend our Mercury Radiators to complement your system.

The Slimline model requires an expansion vessel which is not supplied with the unit.

Fusion E10 Combination Unit

This is a fully packaged unit in a pre-fabricated elegant enclosure complete with all the components required to provide both heating and hot water for retrofit and new build installations.

Generally this unit would be located in a typical airing cupboard, however due to its 'Plug and Play' design it can be positioned in any similarly sized area.

This versatile product can be supplied in various outputs and capacities to accommodate most installations.

E10 Solar Combination Unit

The Solar version has been designed to meet the ever increasing requirement for renewable technology within the new build market and the energy conscious retrofit buyer.

Built around the proven technology of our Fusion E10 Combination Unit, the E10 Solar Combi has been further developed to include a **solar pump station** and unvented **solar hot water cylinder**. With the additional solar components, the SAP rating of the property is increased as the carbon emission profile is reduced.

All Fusion products can be installed in under-floor heating applications.



Fusion complete with Direct cylinder



Fusion complete with Indirect cylinder



The Fusion E10 Combination unit



Unlike most electric boilers, Fusion boilers are designed to eliminate unnecessary external plumbing and pipe work. They are the ideal choice for wet central heating and are also suited to underfloor heating systems.

The Fusion Standard boiler has been engineered to include the pump, auto-air vent, expansion vessel and pressure gauge within the compact casing.

With the exception of the expansion vessel, the Slimline version boasts all the advantages of the Standard model.

This allows both boiler types to be discreetly located in either a cupboard or wall mounted e.g. in the kitchen area.

The sleek design of the Slimline has enabled us to incorporate it within the E10 Combination unit and the outstanding E10 Solar Combination unit.

To ensure maximum efficiency, all Fusion boilers incorporate six stage heating using a single copper heat exchanger. With this unique facility the boiler will modulate so that both electricity consumption and running costs are controlled through all heating cycles.

The easy-to-use control panel allows both the installer and home owner to identify the operating temperatures on the flow and return, system flow rate and kW output of the boiler at any given time.

The control panel also enables the installer to utilise the inbuilt self diagnostic feature during installation or routine maintenance.

The operating temperature of the boiler can be adjusted using the control panel and range from 40 degrees through to a maximum 85 degrees.

Our single phase boiler outputs are 6kW, 9kW and 12kW. The 14.4kW is available for properties that require a higher output.

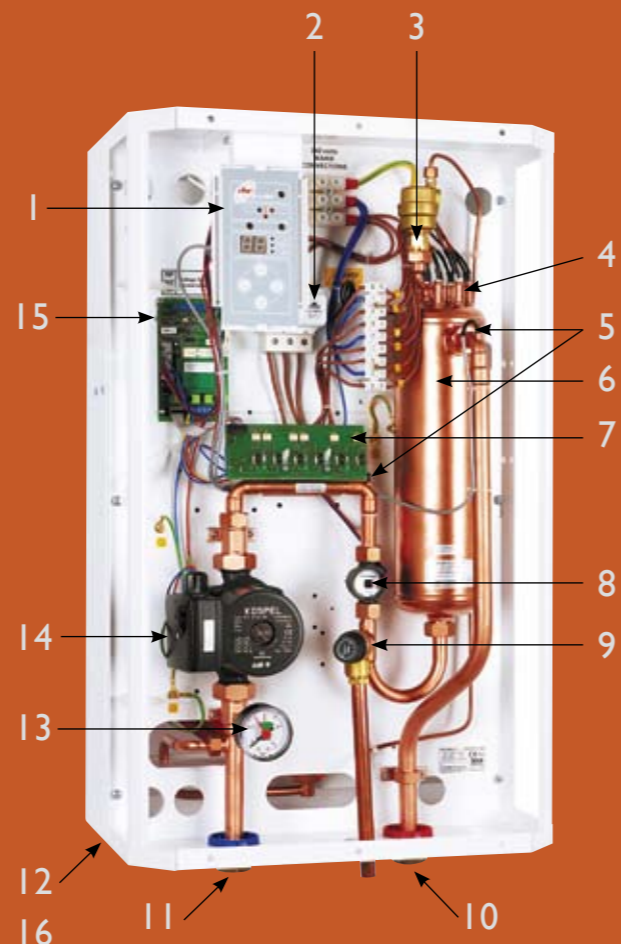
For multiple boiler installations it is also possible to install the boiler in series to suit non domestic situations.

In light commercial properties with a 3-Phase electricity supply, we supply 24kW and 36kW output boilers within the Fusion Standard range.

The complete Fusion range is BEAB Approved guaranteeing you complete peace of mind for the lifetime of your product.



Fusion Slimline and Standard

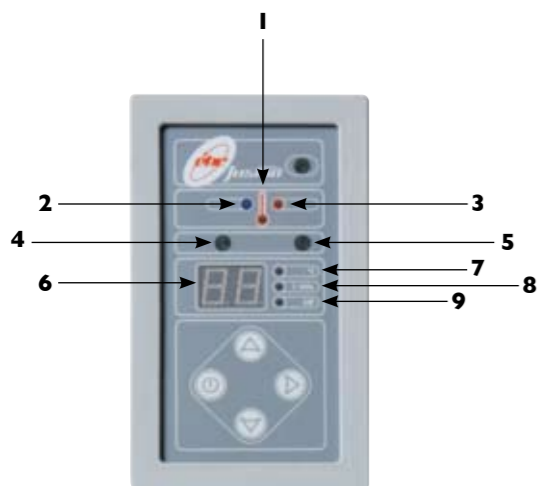


Boiler key

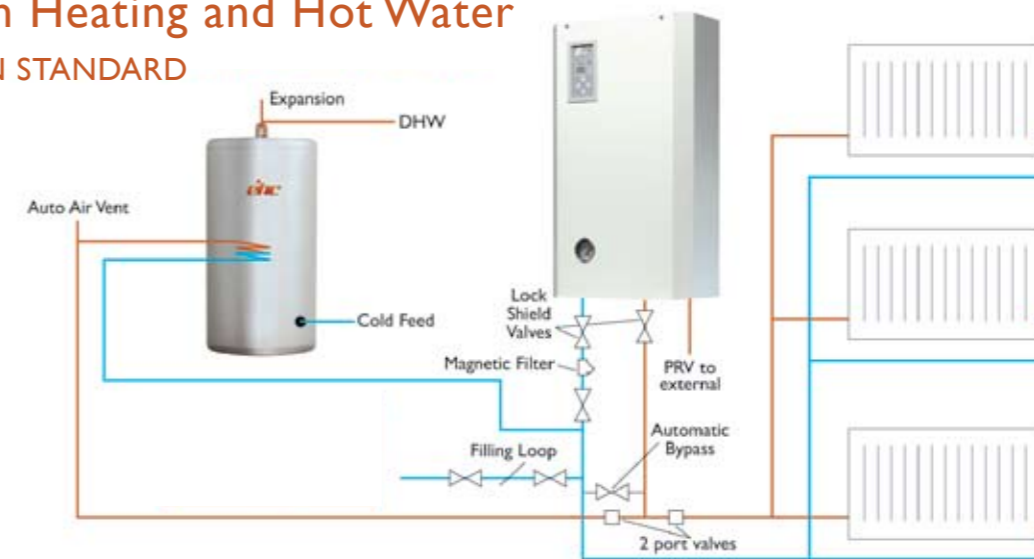
- 1 Control Panel
- 2 Over Heat Cut-Out
- 3 Automatic Air Vent
- 4 Heating Elements
- 5 Flow & Return Sensors
- 6 Copper Heat Exchanger
- 7 Printed Circuit Board
- 8 Flow Switch
- 9 Pressure Relieve Valve
- 10 Heating Flow
- 11 Heating Return
- 12 White Metal Enclosure
- 13 Pressure Gauge
- 14 Circulation Pump
- 15 Voltage Free Control Connections
- 16 Expansion Vessel
(not applicable to Fusion Slimline Boiler)

Control Panel key

- 1 Boiler Temperature
- 2 Return Temperature Indicator
- 3 Flow Temperature Indicator
- 4 Pump Indicator
- 5 Heating Demand Indicator
- 6 Digital Display
- 7 Set Point Temperature
- 8 Flow Rate
- 9 Power Usage Indicator

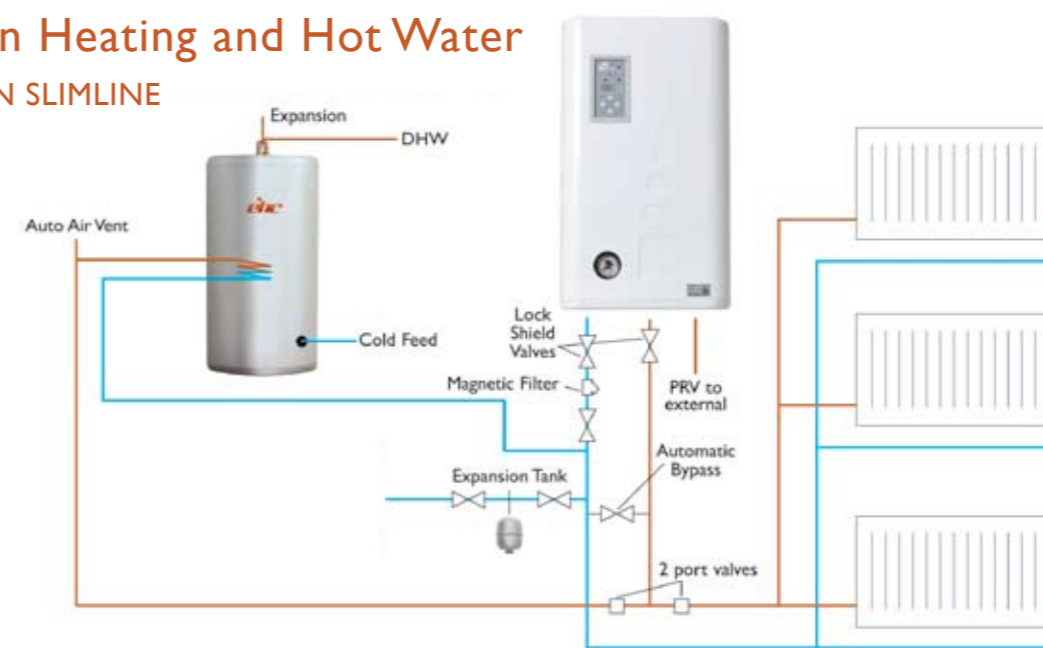


**S-plan Heating and Hot Water
FUSION STANDARD**



The Fusion Boiler can also be used for heating only installations

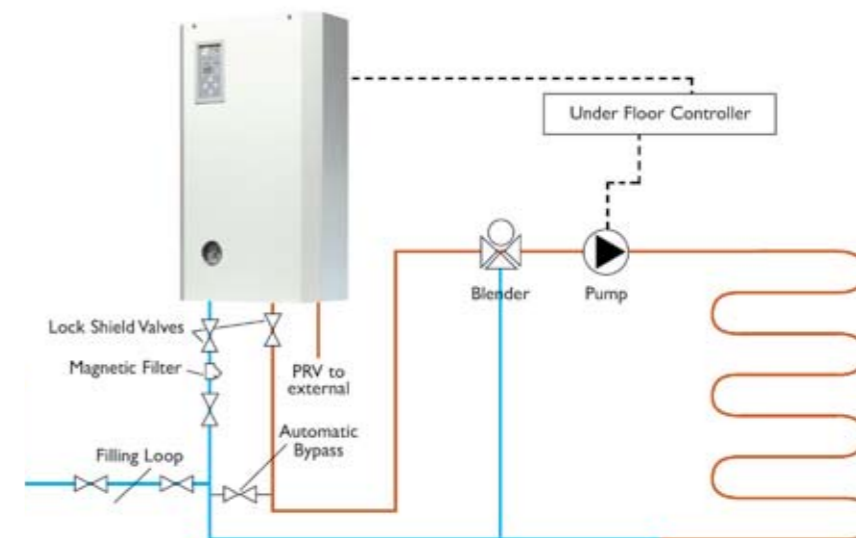
**S-plan Heating and Hot Water
FUSION SLIMLINE**



The Fusion Slimline can also be used for heating only installations

**Under Floor Heating
FUSION STANDARD**

N.B. The above schematics are for illustration purposes only. Please consult the Fusion installation manual for full instructions.





Fusion E10 Electric Combination unit



Fusion E10 Electric Combination unit

The Fusion E10 Electric Combination unit offers the comfort and convenience of wet central heating and domestic hot water for all domestic properties with no access to mains gas. It is compact in size and has been designed to fit into a standard domestic airing cupboard, making it ideal for a range of properties as there are no flue requirements.

Housed in an elegant enclosure, the Fusion E10 is a fully packaged pre-fabricated unit. It comes complete with the Fusion Slimline Electric Boiler, indirect stainless steel hot water cylinder and is pre-plumbed using the 'S' Plan configuration.

The 'S' Plan configuration enables you to select 'heating only', 'hot water only' or both at the same time. As the boiler is also heating the indirect cylinder, the re-heat times for the hot water are superior to that of a traditional electric direct cylinder. The cylinder contains a 22mm stainless steel coil for the main heat source. It also has a back up immersion heater to provide complete peace of mind.

An added feature of our stainless steel cylinder is that no anode is required unlike mild steel variants. This eliminates future maintenance costs as the anode requires to be replaced on a regular basis.

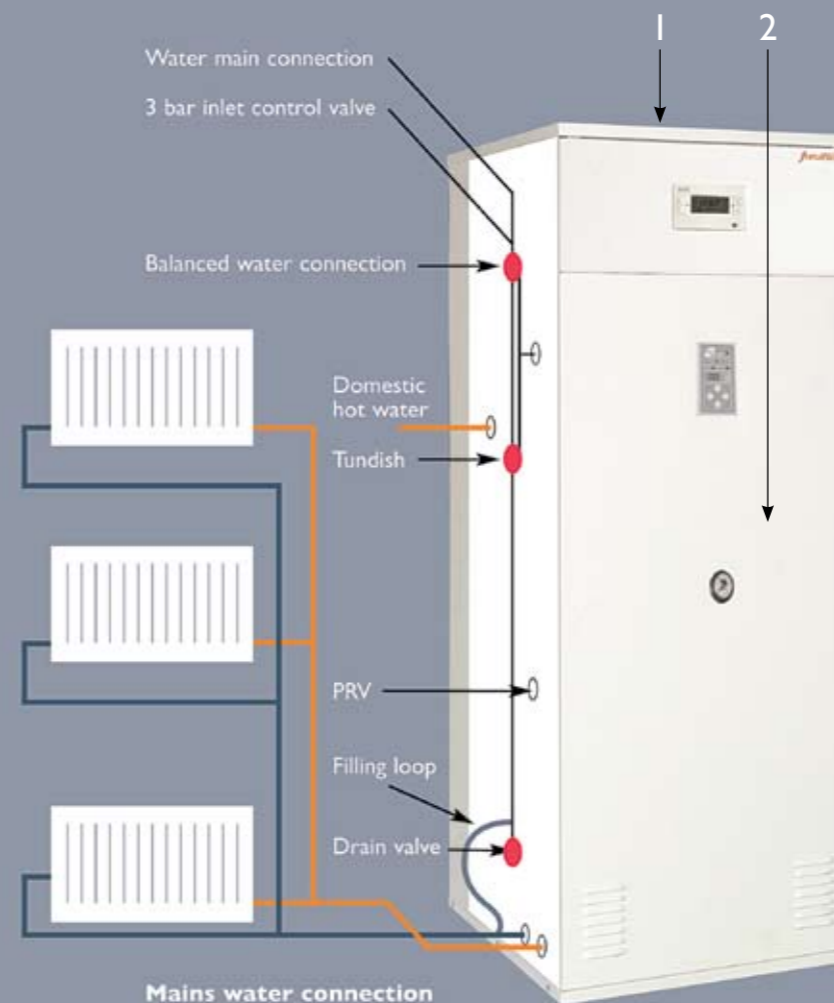
Also incorporated are the expansion vessels required for both the heating and domestic hot water.

The unit is pre-wired with a programmable Controller to provide full control of both the central heating and domestic hot water, and is supplied complete with tundishes and control valves.

The boiler outputs applicable to the Fusion E10 Combination unit are 9kW and 12kW. The 14.4kW is available for properties which require a higher output.

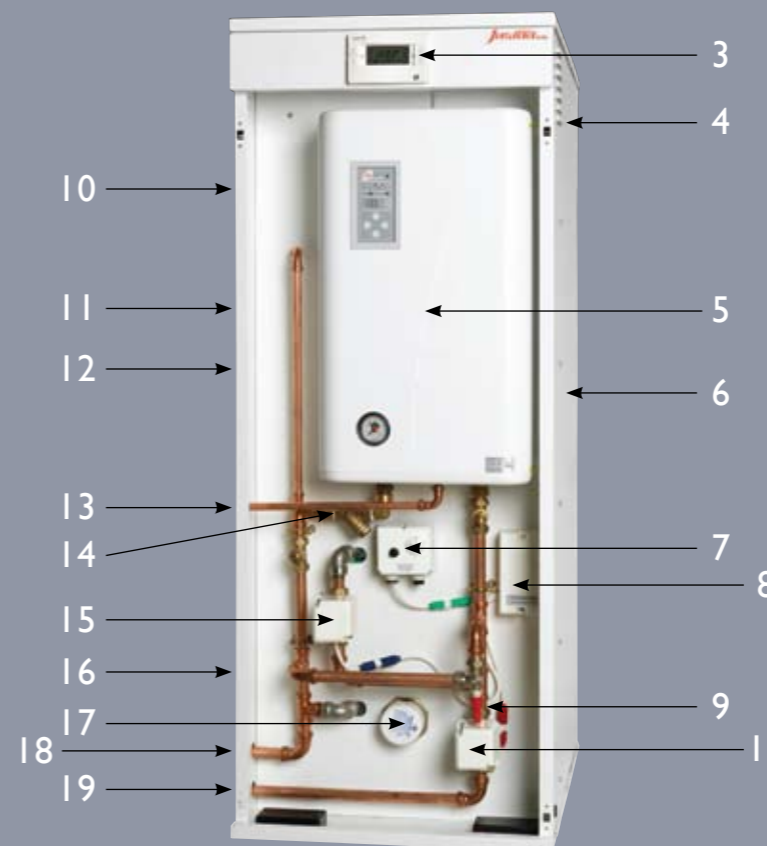
Prior to being fitted in the enclosure the cylinder is coated and insulated with 50mm HCFC & CFC free foam to meet current energy efficiency guidelines.

- Pressure tested to 15 Bar
- Relief valve operates at 7 Bar - 90°C
- 3 Bar working pressure
- 22mm domestic and primary connections
- Up to 50 litres per minute flow rate for Domestic Hot Water



Mains water connection

This must not be fixed pipe work
The use of a filling loop will be required and disconnected after use



Features

- Controllable, efficient wet central heating
- Programmable controls to suit off-peak times offered by the Economy 10 tariff.
- Uses standard radiators and thermostatic radiator valves
- Designed as a sealed system
- Domestic hot water from un-vented indirect stainless steel cylinder offering mains pressure hot water
- Cylinder manufactured from duplex stainless steel
- No flue and no fuel tanks required
- Silent in operation
- Front panel indicator to show boiler status
- Soft start approach to avoid power surges
- Integral magnetic filter for boiler protection
- Adjustable controls to determine boiler temperature outputs
- Minimal service and maintenance costs
- No requirement for annual gas safety certificate
- On-site parts and labour guarantee
- 10 year guarantee on the cylinder
- 2 year guarantee on boiler and other controls

Enclosure key

- 1 Enclosure
- 2 Removable Door
- 3 Twin Channel Programmer
- 4 Rear Compartment - Expansion Vessels
- 5 Fusion Slimline Boiler
- 6 Rear Compartment - Cylinder
- 7 Cylinder Stat
- 8 Wiring Centre
- 9 Automatic Bypass
- 10 Domestic hot water Temp-Pressure Relief Outlet
- 11 Programmer Cable
- 12 Domestic hot water Outlet
- 13 Central Heating Pressure Relief Outlet
- 14 Magnetic Filter
- 15 Zone Valves
- 16 Cold Main
- 17 Immersion Heater
- 18 Central heating Return
- 19 Central heating Flow

Performance Table

150 Litre Cylinder	9kW	12kW	14.4kW
Time to re-heat after 70% Draw-Off (minutes)	40	30	25
Time to re-heat from 15C to 60C (minutes)	60	45	38
180 Litre Cylinder	9kW	12kW	14.4kW
Time to re-heat after 70% Draw-Off (minutes)	53	40	33
Time to re-heat from 15C to 60C (minutes)	80	60	50

The Solar Combination unit



An acknowledged innovator in the field of electric heating and hot water systems, EHC has developed the **'Plug and Play'** Solar Combination Unit to meet the ever increasing demand for **renewable** technology. Based around the highly successful Fusion E10 Combination Unit, the product has been developed further to include a **solar pump station** and un-vented **solar hot water cylinder**.

The Solar Combination Unit helps improve the SAP rating of a property as it reduces the carbon emission profile. It is an ideal product for developers and Social Landlords who are increasingly utilising renewable products to comply with current legislative standards.

The EHC Solar Combination Unit is completely Pre-plumbed and Pre-wired with the following equipment:

- Fusion Slimline Electric boiler in sizes 9kW, 12kW and 14.4kW
- 180 litre direct, un-vented, solar cylinder
- Pre-wired programmer and cylinder thermostat
- Pre-fitted pump station
- Intelligent solar management system
- External plumbing kit complete with tundishes and control valve for the incoming water main connection.

The Solar Combination Unit shares all the benefits of the Fusion electric boiler which, when used with the Economy 10 tariff, provides a very cost effective alternative to electric storage heating, oil, solid fuel or LPG systems. It is the perfect solution for properties with no access to mains gas or homes which have gas restrictions and brown field sites. Not only is the unit the ideal choice for conventional wet central heating but is also suited to under-floor heating systems.

Additionally we offer an optional hard wired control system to ensure that you optimise the benefit of hot water gained from your solar system. This will minimize the need to utilise the 'back up' immersion heater.

Prior to being fitted in the enclosure the cylinder is coated and insulated with 50mm HCFC & CFC free foam to meet current energy efficiency guidelines.

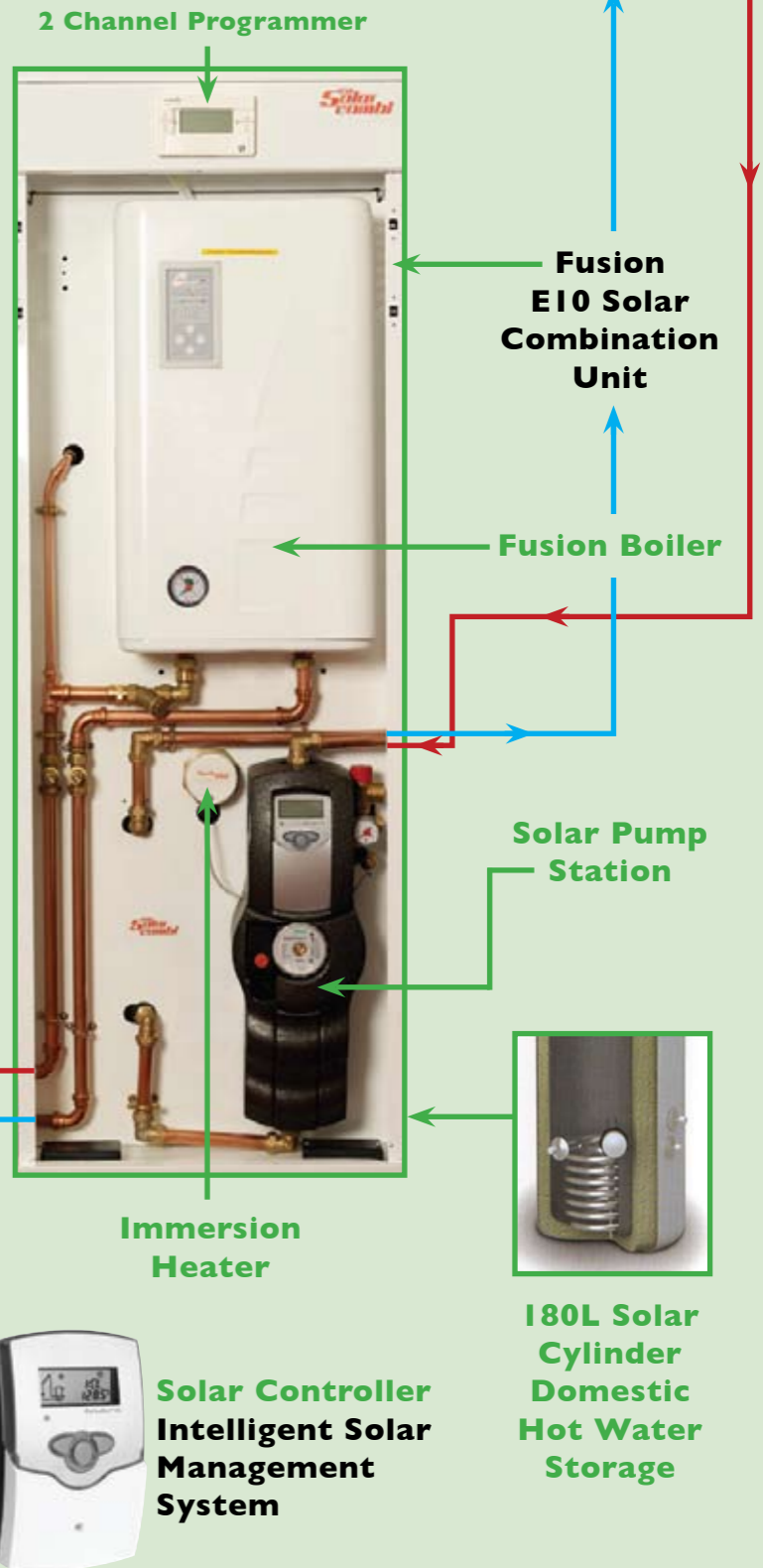
The cylinder contains a 22mm Stainless Steel Solar coil for the main heat source. It also has a back up immersion heater to provide complete peace of mind.

- Pressure tested to 15 Bar
- Relief valve operates at 7 Bar - 90°C
- 3 Bar working pressure
- 22mm domestic and primary connections
- Up to 50 litres per minute flow rate for domestic hot water.



Features

- Controllable, efficient wet central heating
- Programmable controls to suit off-peak times offered by the Economy 10 tariff.
- Uses standard radiators and thermostatic radiator valves
- Designed as a sealed system
- Domestic hot water from un-vented direct stainless steel cylinder offering mains pressure hot water
- Cylinder manufactured from duplex stainless steel
- No flue and no fuel tanks required
- Silent in operation
- Front panel indication to show boiler status
- Soft start approach to avoid power surges
- Integral magnetic filter for boiler protection
- Adjustable controls to determine boiler temperature outputs
- Minimal service and maintenance costs
- No requirement for annual gas safety certificate
- On-site parts and labour guarantee
- 10 years guarantee on the cylinder
- 2 years guarantee on boiler and other controls



The Electric Heating Company can assist with the system design when using the E10 Solar Combination Unit

Technical specifications - Fusion Electric Boiler

Fusion Electric Boiler					
Boiler Range	kW	6kW	9kW	12kW	14.4kW
Pipe Entry From Boilers		Bottom Entry			
Flow and Return Pipes	mm	22			
Min Water Pressure	Bar	1.0			
Max Water Pressure	Bar	3.0			
Expansion Vessel	Litre	6.0			
Dry Weight	Kgs	25			
Electricity Supply		230/240V 1ph 50 Hz			
Load/Current	Amp	26.1	39.1	52.2	62.6
Heating Output	Btu	20,478	30,717	40,956	49,147
Potentiometer Max Temp Settings (Factory Set)	°C	85			
Min Temp Setting	°C	40			
Overheat Protection	°C	100			
Pump Included		Yes			
Recommended Pump Settings		Set to max			
Protection	Amp	32	45	63	80

Controls

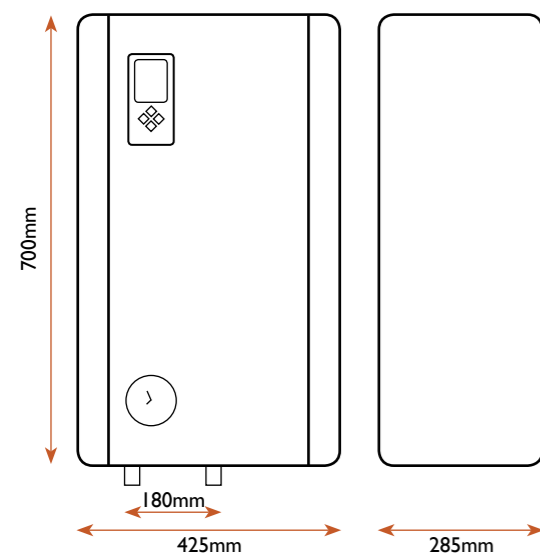
EHC Heating only:
EHC Single Channel Heat Pack

Central Heating & Domestic Hot Water:
EHCTwin Channel Heat Pack

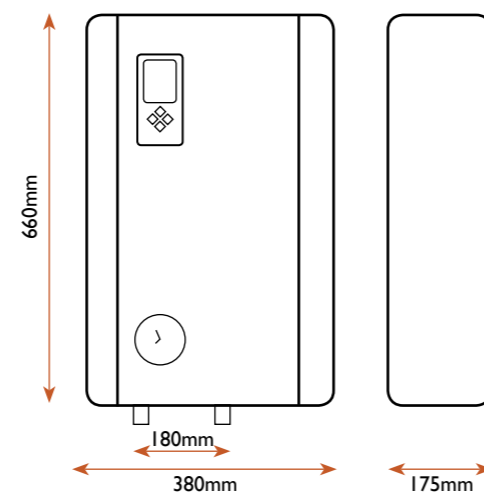
Visit our website for 3 phase Fusion Boilers available in 24kW and 36kW.

Disclaimer - All figures are correct at time of printing and may be subject to change.

Standard boiler dimensions



Slimline boiler dimensions



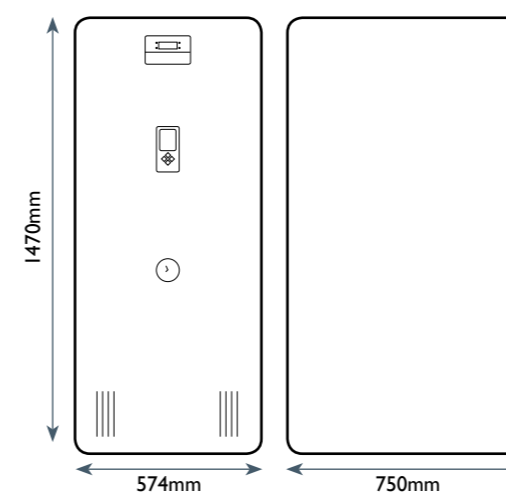
Technical specifications - Fusion E10 Combination and Solar Unit

Fusion E10 Combination Unit				Fusion E10 Solar Combi			Domestic Hot Water
Boiler Range	9kW	12kW	14.4kW	9kW	12kW	14.4kW	
Heating Output	30,717	40,956	49,147	30,717	40,956	49,147	
Electricity Supply	230/240V single phase 50Hz			230/240V single phase 50Hz			
Load/Current	39.1A	52.2A	62.6A	39.1A	52.2A	62.6A	
Protection Required	45 A	63 A	80 A	45 A	63 A	80 A	
CH Max Temp Setting	85°C			85°C			
CH Min Temp Setting	40°C			40°C			
CH Overheat Temperature Protection	100°C			100°C			
Pump Included	Yes			Yes			
Pump Settings	Set to max			Set to max			
CH Flow and Return	22mm			22mm			
Domestic and Primary Connections							22mm
Min Water Pressure	1 Bar			1 Bar			1.5 Bar
Max Water Pressure	3 Bar			3 Bar			7 Bar
Expansion Vessels	8 Litre			8 Litre			12 Litre
Immersion Heater							3kW
Dry Weight 150 Litre	96kg						
Dry Weight 180 Litre	104kg			106kg			

CH - Central Heating

Disclaimer - All figures are correct at time of printing and may be subject to change.

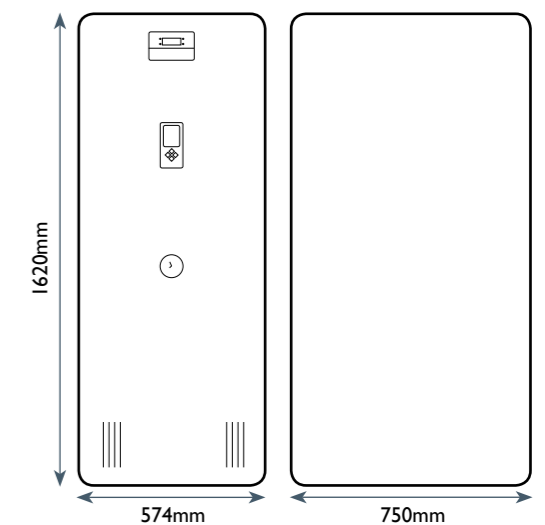
150 Litre E10 Combination Unit



Applies to Fusion Boiler only



180 Litre E10 Combination and Solar Unit



Electric Instantaneous Water Heaters

As a result of the ever increasing popularity of Electric Heating products there has been a demand for alternative Hot Water solutions. Whether installed as an integrated or stand alone system, the EHC Electric Water Heaters offer a unique solution in properties with minimal hot water requirements.

Using the same technology as the Fusion boiler these high quality products will provide you with reliability and comfort for many years to come.

Twister



electric instantaneous water heater

The Twister provides instant hot water for 'over the sink' applications. The blended tap arrangement comes with a fine stream spray nozzle. This enables the unit to provide comfortable temperatures at an economic cost.

The Twister boasts the following benefits:

- Quality mixing tap
- Savings on water and energy up to 50% with the use of fine stream spray head
- Ease of assembly
- Led indicator
- All fittings supplied

Features



Quality mixing tap.



The supplied stream spray head offers up to 50% energy and water savings.



Led indicator.

Application



Available in 3.5kW and 5.5kW outputs

Amicus



The Electric Under Sink appliance is ideal for properties with minimal Hot Water requirements. It is possible to connect this unit to two sinks located next to each other, however they should not be utilised at the same time.

The Amicus boasts the following benefits:

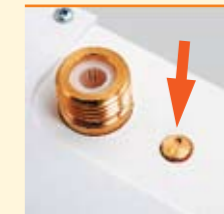
- Mains Pressure appliance - can be connected to any tap.
- Temperature modulation with the flow rate
- The regulating valve allows you to set comfortable temperatures at the maximum flow of water during installation
- Fine stream spray head guarantees comfortable use and up to 50% energy savings.



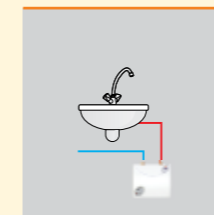
Copper shielded heating elements
Reliable technology ensures long life, resistance to water decay and air bubbles.



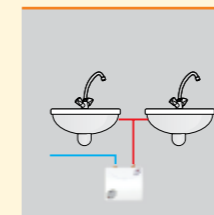
The supplied stream spray head offers up to 50% energy and water savings.



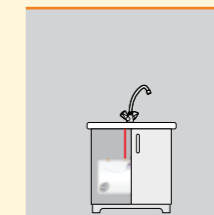
Regulating valve allows for setting comfortable temperature at a maximum possible flow of water.



6kW



6kW



6 kW

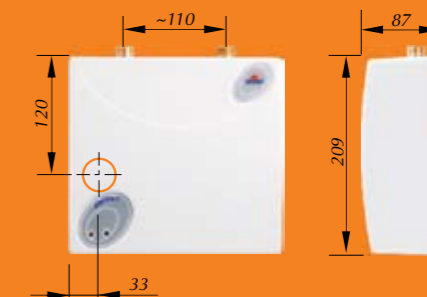
Technical data

Type	EPS Twister	
Rated power	kW	3,5 5,5
Rated voltage		240V
Rated current	A	14,6 22,9
Fuse rated current	A	16 25
Min. connecting wires section	mm ²	2,5 6,0
Efficiency (at 30°C/ 86°F temp. rise)	l/min	1,9 2,9
Supply water pressure	MPa	0,12 ÷ 0,60
Dimensions	mm	211 x 140 x 70
Weight	kg	~ 1,4
Inlet and outlet section		Gz 1/2"
Safety class		IP25



Technical data

Type	EPO Amicus	
Rated power	kW	6
Rated voltage		240V
Rated current	A	25,0
Fuse rated current	A	32
Min. connecting wires section	mm ²	6,0
Efficiency (at 30°C/ 86°F temp. rise)	l/min	2,9
Supply water pressure	MPa	0,12 ÷ 0,60
Dimensions	mm	209 x 229 x 87
Weight	kg	~ 2,4
Inlet and outlet section		Gz 1/2"
Distance between inlet and outlet	mm	~110
Safety class		IP24



Opus

electric shower



This versatile Electric Shower is suitable for bathrooms and en-suites alike. It provides you with convenience of showering day or night for all the family.

This elegant product offers complete reliability and is fully controllable for water temperature and water flow via the easy to use controls. The unit is supplied with a stylish chrome effect Shower Head and associated fittings.

Via the priority switch the unit can be installed in conjunction with the Fusion Electric Boiler without creating electricity load issues.

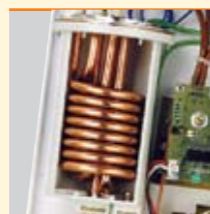
Features



Electronic regulation of water temperature

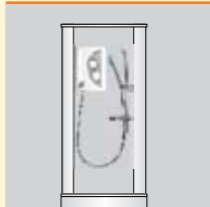


Water flow regulation knob



Copper shielded heating elements
Reliable technology ensures long life, resistance to water decay and air bubbles.

Application



Technical data

Type	EPA.. Opus	
Rated power	kW	8,4
Rated voltage		240 V~
Rated current	A	35,0
Fuse rated current	A	40
Min. connecting wires section	mm ²	10
Efficiency (at 30°C/ 86°F temp. rise)	l/min	4,0
Supply water pressure	MPa	0,1 ÷ 0,6
Dimensions	mm	295 x 200 x 100
Weight	kg	~2,3
Inlet and outlet section		Gw 1/2"
Safety class		IP25



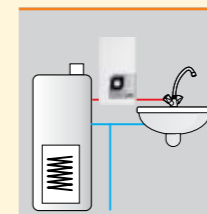
electronic Bonus



suitable for solar panels and heat pumps

electric instantaneous water heater

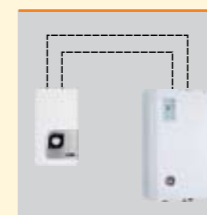
Features



Will work in conjunction with solar panels, heat pumps and pre-heated water.



Electronic control system ensures stability and modulation of water temperature from 30°C to 60°C.



Priority switch provides a solution to electricity load issues if used in conjunction with the Fusion Electric Boiler.



Copper shielded heating elements Reliable technology ensures long life, resistance to water decay and air bubbles.

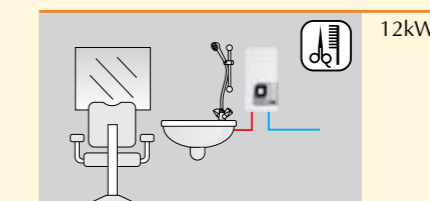
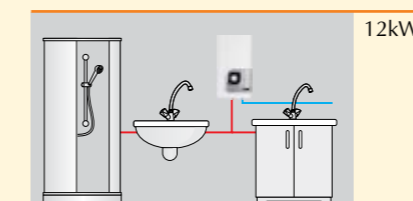
The Bonus electronic Instantaneous Water Heater is designed with State of the Art technology to supply single and multiple outputs. This powerful heater will provide hot water solutions for sinks and showers.

It can also be combined with both Solar Powered and Heat Pump systems.

The Electronic Control system within the unit enables you to select the required temperature between 30°C to 60°C. The unit will also modulate dependant on flow rate and incoming supply temperature.

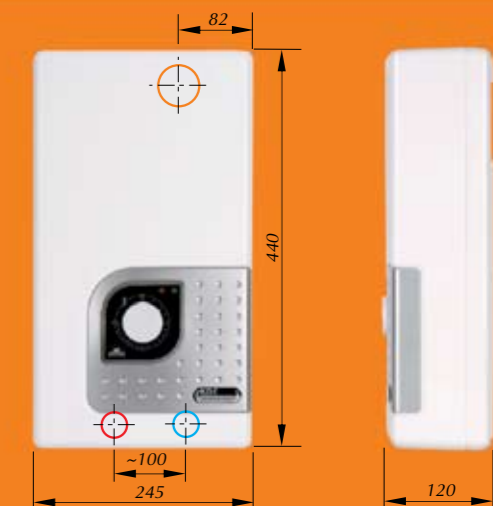
Via the Priority switch the unit can be installed in conjunction with the Fusion Electric Boiler without creating electricity load issues.

Application



Technical data

Type	Bonus electronic	
Rated power	kW	12
Rated voltage		240V ~
Rated current	A	50,0
Fuse rated current	A	63
Min. connecting wires section	mm ²	16
Efficiency (at 30°C/ 86°F temp. rise)	l/min	5,8
Supply water pressure	MPa	0,1 ÷ 0,6
Dimensions	mm	440 x 245 x 120
Weight	kg	~ 5,1
Inlet and outlet section		Gw 1/2"
Distance between inlet and outlet	mm	~100
Safety class		IP 24





electric storage water heater

As the Luna is equipped with its own water tank, hot water is supplied immediately. It is the perfect choice for sinks and washbasins.

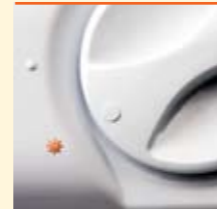
Features



Plastic container fully resistant to corrosion.



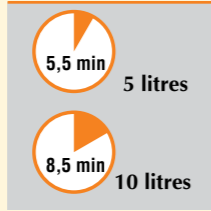
Excellent thermal insulation made of high density polyurethane.



Frost protection setting at 7°C



Tap included in the set



Rapid re-heat times:
 - 5 litre – 5,5 min.(at 25°C temperature rise)
 - 10 litre – 8,5 min.(at 25°C temperature rise)

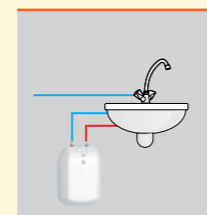


Temperature range between 23°C - 70°C

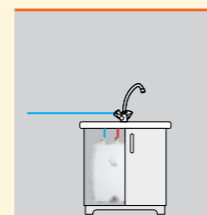
The Luna boasts the following benefits:

- 8,5 minutes to reach a 40°C temperature
- Temperature range 23°C to 70°C
- Anti-frost protection
- Water tank insulated with polyurethane foam
- Body made of polypropylene, no corrosion
- Ease of installation
- Modern design

Application



5 litre



10 litre

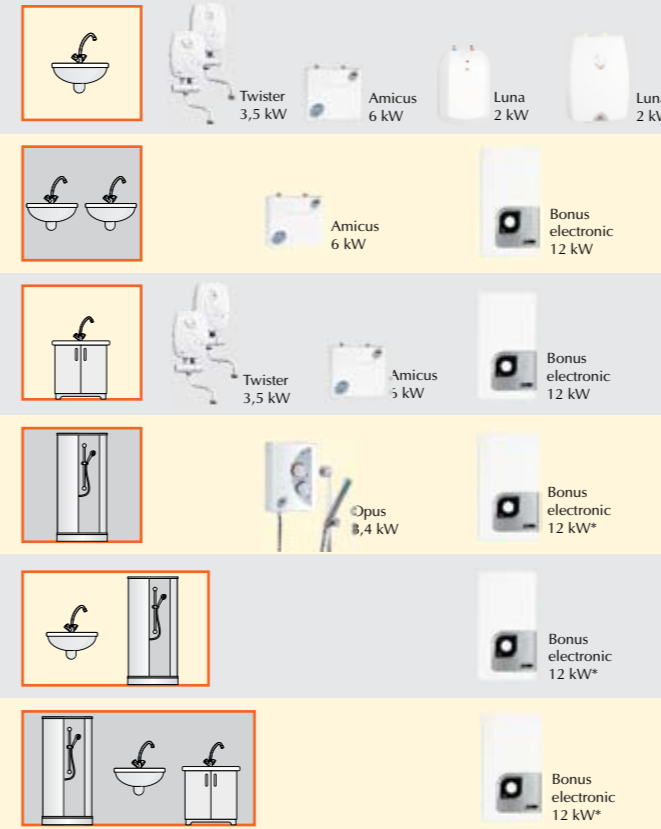
Technical data

Type	POW.D-5	POW.D-10
Capacity	1	2
Rated power		2000W
Rated voltage		240V~
Rated current	A	8,3
Rated pressure	MPa	0
Temperature range	°C	23 - 70
Dimensions	mm	427x285x163
Weight	kg	~3,8
Inlet and outlet section	Gw 3/8"	Gz 1/2"
Safety class		IP X4



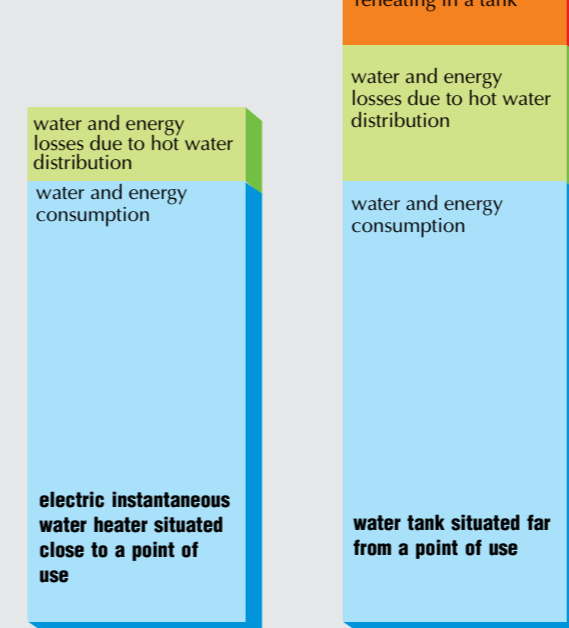
Choosing the correct water heater

As there are a number of factors to consider when deciding on the correct water heater, below you will find a chart to help you make the correct choice of water heater.



* Mounted externally to shower cabinet

Cost effectiveness



Electric instantaneous water heaters enable you to obtain hot water immediately after turning the tap on. Because energy is consumed only while water is being used, it eliminates losses related to heat storage.

Due to the dimensions of the heaters and their aesthetic look they can be assembled in the immediate vicinity of a tap which substantially reduces heat and water losses.

Compulsory requirements for electric water heater installations in bathrooms or wet areas

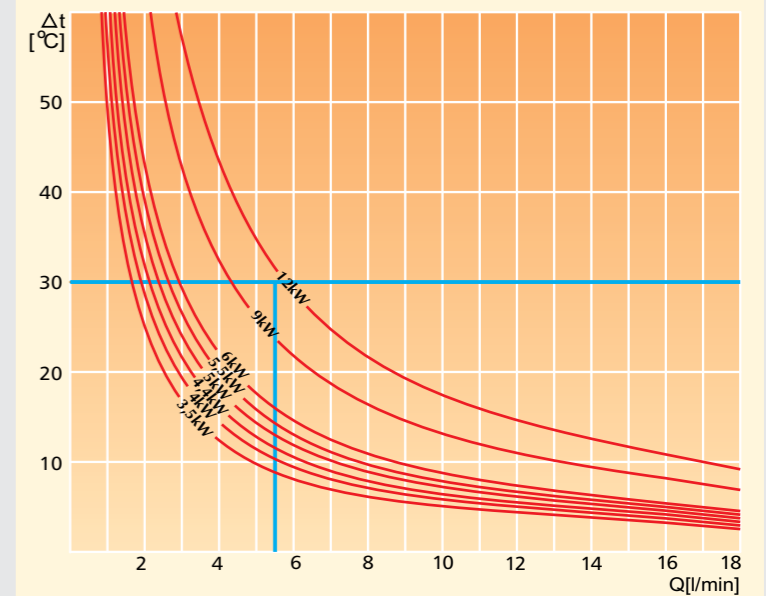


When using electrical appliances in bathrooms or wet areas they must conform to the current regulations. IEE wiring regulations have identified particular zones within these areas to indicate which type of electrical equipment that can be installed and where.

- **Zone 0** – the interior of the bath or shower which can hold water – IPX7
- **Zone 1** – The area directly above zone 0 limited vertically to 2,25m above the bottom of the bath or shower – IPX5 (Opus - within shower cabinet)
- **Zone 2** – The area beyond 0 and 1; 0,6m horizontally and up to 2,25m vertically – IPX4 (Twister, Amicus, Bonus, Luna)
- **Zone 3** – The area beyond zone 2; 0,6m horizontally and up to 2,25m vertically – IPX1



Efficiency characteristics of instantaneous water heaters



The chart above shows the water heater efficiency dependent on temperature rise. In order to reach water temperature of 40°C, the heater should warm it up by about 30°C (horizontal line). For example, 12kW water heater makes possible to achieve between 5 and 8 litres of hot water per minute (vertical line).

A unique concept in heating the contemporary or traditional home

The EHC Mercury radiator range is a unique concept in wet system radiators. An aluminium outer case conceals an internal copper pipe heat exchanger which transfers heat to the radiator culminating in a high performance and energy saving heater.

With the benefits of both Convection and Radiant heat you will enjoy added comfort throughout the home. This contemporary designed radiator is suitable for use with all types of boilers: gas, electric, oil, solid fuel and LPG.

Mercury radiators are constructed to provide all the benefits offered by Low Water Content appliances as less water within the system adds up to reduced running costs.

Distinctive features of the Mercury radiator are the bottom central connections. Both the flow and return connections are located to the centre of all radiators which allow the heating engineers to install the pipe work to the same central position for all radiator sizes. The range offers a choice of dual pipe isolating valves for easy and tidy connection between the pipe work and radiator. Additionally, due to the ultra lightweight design of the radiators, all of the range is easily positioned. The lightest radiator is 3.9kgs with the heaviest being 13.4kgs.

The Mercury radiators can be installed as part of an Electric Wet Central Heating System and as such are suited to the Fusion Electric Boiler which also boasts Low Water Content heating benefits.

The radiators are a popular choice for Renewable Technologies such as **Air and Ground Source Heat Pumps**. Due to the reduced temperature outputs of such products the unique Low Water Content structure of the Mercury Radiators enables you to maximise the benefits offered by these systems.

Each radiator comes with an in-built Thermostat body that can be controlled via our choice of TRV heads in the same fashion as a conventional wet system radiator. The design of the radiator ensures that there is no likelihood of internal corrosion.

Available in either Brushed Steel or Brilliant White, with an option of a white or white/chrome thermostatic heads, EHC Mercury radiators are suitable for all types of properties from contemporary to traditional. We offer a range of sizes with a choice of standard height and low profile models suitable for properties with low sills and conservatories.



Low Water content = Lower running costs

Mercury Radiators - the energy saving high performers

- **Low Water Content**
- **Ultra lightweight design**
- **Easy to install**
- **Rapid heat up times**
- **Suitable for all fuel types**
- **Perfect for Air/Ground Source Heat Pumps**
- **Inbuilt Thermostat**
- **Low Profile models available**
- **Central Pipe work connections**
- **Economical to operate**
- **Choice of Thermostatic heads**
- **Easy-fit choice of valves**
- **Unique Wall mounting kit**
- **15 years Guarantee**



WET SYSTEM RADIATORS SPECIFICATIONS

Description	85/75/20		75/65/20		Water Capacity (litres)	Width (mm)	Height (mm)	Depth (mm)	Dry Weight (kg)	Product Code
	Rating Watts	Rating Btu's	Rating Watts	Rating Btu's						
Mercury White Standard Radiator c/w Thermostat	575	1962	479	1634	0.52	400	600	90	3.9	MWW6/40
Mercury White Standard Radiator c/w Thermostat	1109	3784	922	3146	0.68	600	600	90	5.5	MWW6/60
Mercury White Standard Radiator c/w Thermostat	1599	5456	1331	4541	0.84	800	600	90	7.1	MWW6/80
Mercury White Standard Radiator c/w Thermostat	2125	7251	1769	6036	1.04	1000	600	90	8.8	MWW6/100
Mercury White Standard Radiator c/w Thermostat	2712	9253	2257	7701	1.14	1200	600	90	10.4	MWW6/120
Mercury White Standard Radiator c/w Thermostat	3336	11382	2777	9475	1.37	1400	600	90	11.3	MWW6/140
Mercury White Standard Radiator c/w Thermostat	3948	13471	3287	11215	1.51	1600	600	90	13.4	MWW6/160
Mercury Brushed Steel Standard Radiator c/w Thermostat	575	1962	479	1634	0.52	400	600	90	3.9	MBSW6/40
Mercury Brushed Steel Standard Radiator c/w Thermostat	1109	3784	922	3146	0.68	600	600	90	5.5	MBSW6/60
Mercury Brushed Steel Standard Radiator c/w Thermostat	1599	5456	1331	4541	0.84	800	600	90	7.1	MBSW6/80
Mercury Brushed Steel Standard Radiator c/w Thermostat	2125	7251	1769	6036	1.04	1000	600	90	8.8	MBSW6/100
Mercury Brushed Steel Standard Radiator c/w Thermostat	2712	9253	2257	7701	1.14	1200	600	90	10.4	MBSW6/120
Mercury Brushed Steel Standard Radiator c/w Thermostat	3336	11382	2777	9475	1.37	1400	600	90	11.3	MBSW6/140
Mercury Brushed Steel Standard Radiator c/w Thermostat	3948	13471	3287	11215	1.51	1600	600	90	13.4	MBSW6/160

Low Profile Radiators

Mercury White Conservatory Radiator c/w Thermostat	1122	3828	935	3190	0.54	1000	300	90	4.9	MWW3/100
Mercury White Conservatory Radiator c/w Thermostat	1721	5872	1432	4886	0.72	1400	300	90	6.6	MWW3/140
Mercury White Conservatory Radiator c/w Thermostat	2341	7987	1948	6647	0.91	1800	300	90	8.4	MWW3/180
Mercury Brushed Steel Conservatory Radiator c/w Thermostat	1122	3828	935	3190	0.54	1000	300	90	4.9	MBSW3/100
Mercury Brushed Steel Conservatory Radiator c/w Thermostat	1721	5872	1432	4886	0.72	1400	300	90	6.6	MBSW3/140
Mercury Brushed Steel Conservatory Radiator c/w Thermostat	2341	7987	1948	6647	0.91	1800	300	90	8.4	MBSW3/180

Accessories

Mercury White Thermostatic Head	MWTS/1
Mercury White/Chrome Thermostatic Head	MWCWTS/1
Mercury Straight Valve	MSV/1
Mercury Angle Valve	MAV/1



The smart design of the hanging brackets enables you to reverse the radiators if required.



Both valve systems come complete with lockshield valves.

Electricity Tariff Information

The Electric Heating Company recommends the Economy 10 electricity tariff for their range of electric heating products. EHC will discuss with all Plumbase and Plumline customers who purchase these products the benefits of the E10 tariff and if necessary assist with the transfer from their current electricity provider.

The Economy 10 tariff offers 10 hours of preferential **Off Peak** rate electricity per day. The off peak times and rates vary across the UK – see below for off peak times.

Regional Electricity Supplier	Off Peak Times
Midlands	00.00 - 05.00 13.00 - 16.00 20.00 - 22.00
South Wales	00.00 - 05.00 13.00 - 16.00 20.00 - 22.00
South Western	00.00 - 05.00 13.00 - 16.00 20.00 - 22.00
South Eastern	00.00 - 05.00 13.00 - 16.00 20.00 - 22.00
London	00.00 - 05.00 13.00 - 16.00 20.00 - 22.00
Eastern	00.00 - 05.00 13.00 - 16.00 20.00 - 22.00
East Midlands	00.00 - 05.00 13.00 - 16.00 20.00 - 22.00
Yorkshire	00.00 - 05.00 13.00 - 16.00 20.00 - 22.00
Scottish Hydro	04.30 - 07.30 13.30 - 16.30 20.30 - 00.30
Scottish Power	04.30 - 07.30 13.30 - 16.30 20.30 - 00.30
Manweb	04.30 - 07.30 13.30 - 16.30 20.30 - 00.30
Norweb	00.00 - 05.00 13.00 - 16.00 20.00 - 22.00
Southern	00.00 - 05.00 13.00 - 16.00 20.00 - 22.00
Northern	00.00 - 05.00 13.00 - 16.00 20.00 - 22.00

Please note, in the "Off Peak" hours the complete household electricity is on the "Off Peak" rate. Disclaimer - All figures are correct at time of printing and may be subject to change.

Please contact EHC on 01698 820533 for the latest Economy 10 electricity rates.